

Sharp Install Assistant tool

Operational Manual

Ver.1.5

Index

1	Summary	2
2	Basic Information	2
2.1	Operational Environment	2
2.2	Purpose	3
2.3	Required Information	3
3	How to use	4
3.1	Advance preparation	4
3.2	How to use	5
3.2.1	Case: Install only one driver	5
3.2.2	Case: Install multiple drivers	7
3.3	How to Install	9
3.3.1	Copy/ Install to Client PC	9
3.3.2	Case: adding Silent Installation function	10
3.3.3	Case: not adding Silent Installation function	10
4	Troubleshooting	11
4.1	About an error at tool execution	11
4.2	About an error in Installation by User Authority	11
4.2.1	UAC (User Account Control)	11
5	Tredemark Acknowledgments	12

Please note

-
- This document explains operational step of the tool for Silent Installation. Regarding how to print from driver or other settings, please refer to instruction manual of each printer driver or PC-FAX driver.
 - The explanations in this manual assume that you have a working knowledge of your Windows computer.
 - For information on your operating system, please refer to your operating system manual or the online Help function.
 - The explanations of screens and procedures in this manual are primarily for Windows® 7 in Windows environments. The screens may vary depending on the version of the operating system.

Warning

- All information in this manual is subject to change without notice.

1 Summary

This document explains operational step of the tool for Silent Installation.

There is important information that you must confirm before using tool. Please read this document by all means before using this tool. How to use is below.

1. Target printer driver or PC-FAX driver with installer is copied to PC or self-extracting printer driver or PC-FAX driver is extracted.
2. The software which needs to use this tool is installed.
3. Execute the tool, and output the installation set which enables to Silent Installation to any folder by Users Authority.

Regarding how to print from driver or other settings, please refer to instruction manual of each printer driver or PC-FAX driver.

2 Basic Information

2.1 Operational Environment

Item	description	Note
Support OS	Windows® XP Professional SP2 or SP3 or Later Windows® XP Professional x64 Edition SP2 or Later Windows Vista® SP2 or Later (32/64bit) Windows® 7 SP1 or Later (32/64bit) Windows® 8 (32/64bit) Windows® 8.1 (32/64bit) Windows® 10 (32/64bit)	
Display	1024 x 600 dots resolution and 16-bit color or higher is recommended.	

*The support OS for printer driver and PC-FAX driver depend on the support OS for original printer driver and PC-FAX driver.

2.2 Purpose

1. Silent Installation Function

This tool provide following function when a driver is installed in each client PC.

- Auto configuration (if connected to MFP)
- Installation without user operation. (UI is displayed.)
- drivers of multiple models can be installed by one time operation
- Reduce the installation time

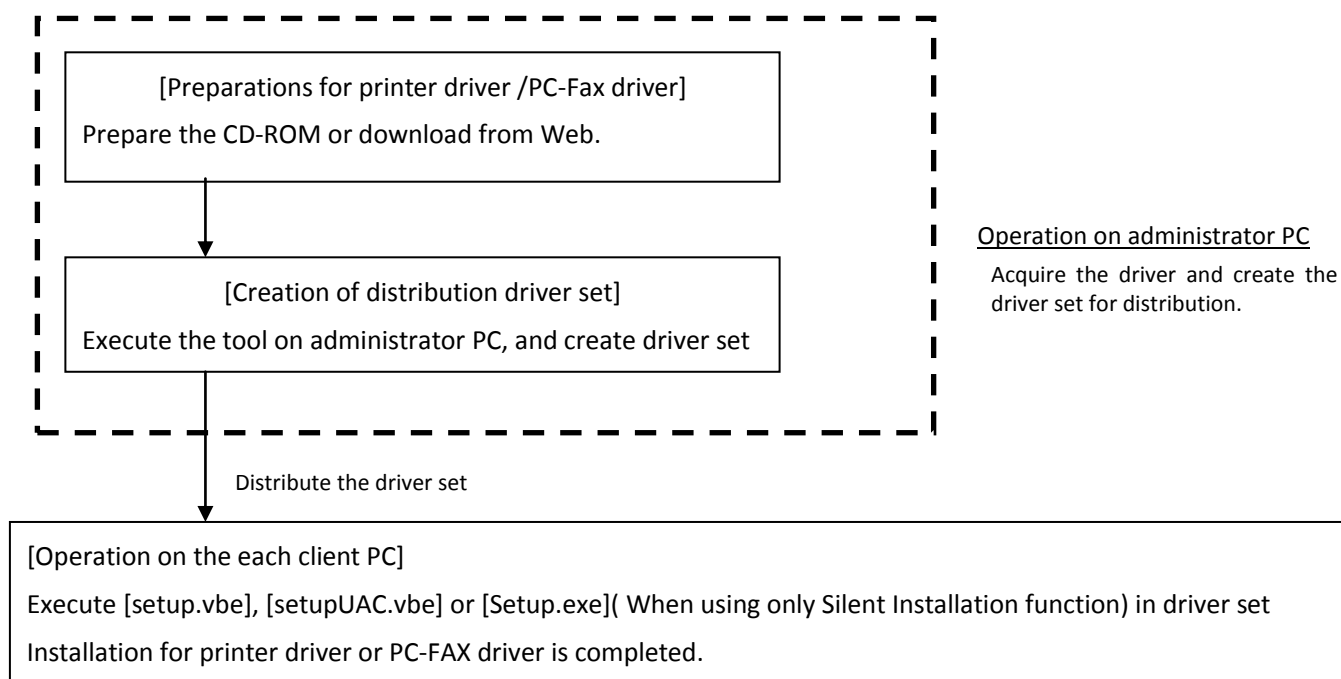
However, following limitation exists.

- The support OS for printer driver and PC-FAX driver depend on the support OS for original printer driver and PC-FAX driver. So, it's not available to automatically switch 32/64bit if installer has both 32 and 64bit.
- When it's displayed UAC (User Account Control) with installation by users authority.

2. Installation by "Users Authority" function

It enable to install by "Users Authority" by embedded administrator ID/Password to exe file.

2.3 Required Information



3 How to use

3.1 Advance preparation

1. Inset the CD-ROM which have target printer driver or PC-FAX driver, or download target printer driver or PC-FAX driver from Web and extract the driver.
 - * Don't include the 2 byte code (Japanese character or 2 byte alphabetic character) in created folder path.
Example) C:\Temp\CD_Drv
2. Create the any folder and copy to the folder which is saved in [Tool.exe], [Tool.bin], [Tool.sii]
 - * Don't include the 2 byte code (Japanese character or 2 byte alphabetic character) in created folder path.
Example) C:\Temp\SharpTool
3. Create the any folder to save created driver set
 - * Don't include the 2 byte code (Japanese character or 2 byte alphabetic character) in created folder path.
Correct) C:\Temp\Tool_Drv
Wrong) C:\Documents and Settings\xxxx\desktop\[output folder]

3.2 How to use

This tool enables to silent install a printer driver or PC-FAX driver by users authority.

This section explains how to use the function.

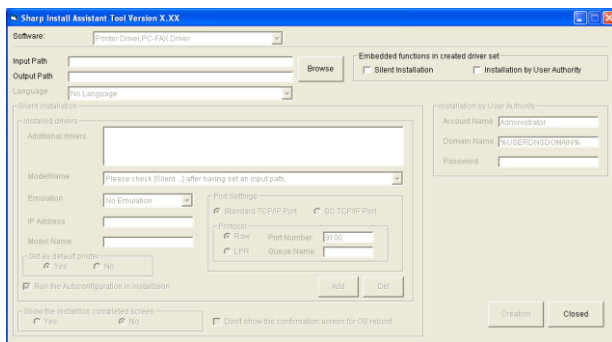
3.2.1 Case: Install only one driver

Step

1 Double click the Tool.exe.

Following screen is displayed.

*Execute the tool by administrator authority.



2 Input the path of printer driver or PC-FAX driver into [Input Path]. Focus on [Input Path] and click the [Browse] button. Following dialog box is displayed, select the folder which is stored driver set and click [OK] button.

(CD-ROM case)

E:¥

(Web download case)

C:¥Drivers¥MX_B15_SPDL2_PS_1102a_Jpn_2kx
pVista



3 Input the path of created printer driver or PC-FAX driver into [Output Path].

Focus on [Output Path] and click the [Browse] button. The dialog box same as above is displayed, select the folder to store driver set and click [OK] button.

4 Select embedded functions in [Embedded functions in created driver set].

Following step5- 13 are settable when Silent installation function is selected, and following step14 is settable when Installation by users authority function is selected.

5 Select the model name in [Model Name] field.

*When check [Silent Installation] in [Embedded functions in created driver set], you can select the model name which is selected in [Input Path].

6 Select the target emulation in [Emulation] field.

7 Input the IP address of target MFP to [IP Address] field.

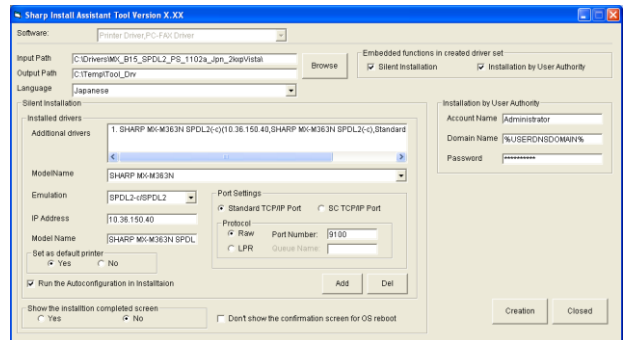
8 Input the printer name of in installed printer driver/ PC-FAX driver in [Printer Name] field. Don't input anything when printer name is not changed.

PC.

9 Select the kind of the TCP/IP port in a driver in [Port Settings].

When [Standard TCP/IP port] is selected, you can select [Raw] or [LPR].

In addition, when you select [Raw], you can change [port number]. And when you select [LPR], you can [queue name].



10 Check [Run the Autoconfiguration in Installation] when you want to run the autoconfiguration.

11 Check [Set as default printer] when you want to set the printer driver/ RC-FAX driver as default.

12 Check [Show the installation completed screen] when show the installation completed screen.

13 Check [Don't show the confirmation screen for OS reboot] when don't show the confirmation screen

14 for OS reboot.

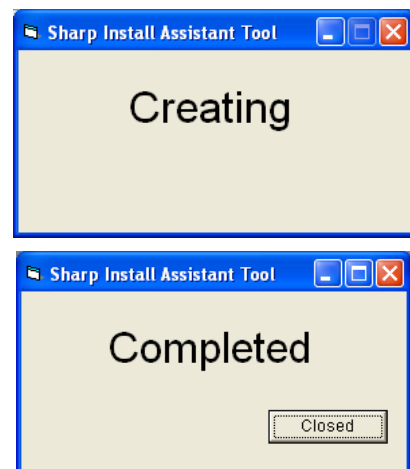
Input user information of administrator authority in [Account Name], [Password] and [Domain Name].

In [Account Name], the default value is "Administrator". In [Domain Name], the default value is "%USERDNSDOMAIN%".

*Don't change the domain name when users of administrator authority exist on domain.

*Change the domain name "%COMPUTERNAME%" when users of administrator authority exist on local

15 Click [Create] button and execute this tool. When dialog box screen turns into "Completed" from "Creating", click [closed] button. When an error is displayed without a completion screen appearing, retry the setting according to an error message.



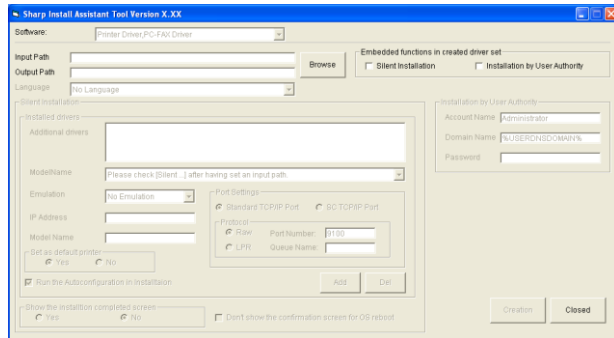
3.2.2 Case: Install multiple drivers

Step

1 Double click the Tool.exe.

Following screen is displayed.

*Execute the tool by administrator authority.



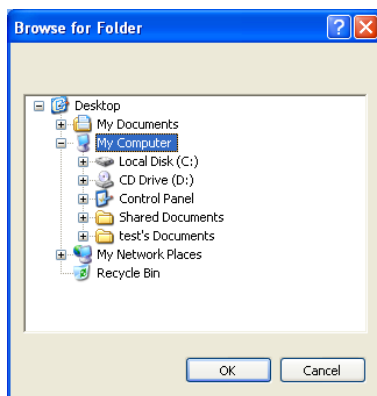
2 Input the path of printer driver or PC-FAX driver into [Input Path].

Focus on [Input Path] and click the [Browse] button. Following dialog box is displayed, select the folder which is stored driver set and click [OK] button.

(CD-ROM case) E:¥

(Web download case)

C:¥Drivers¥MX_B12_SPDL2_PS_1008a_Jpn_2kxpVis
ta



Input the path of created printer driver or PC-FAX driver into [Output Path].

3 Focus on [Output Path] and click the [Browse] button. The dialog box same as above is displayed, select the folder to store driver set and click [OK] button.

Select embedded functions in [embedded functions in created driver set].

Following step5- 13 are settable when Silent installation function is selected, and following step14 is settable when Installation by users authority function is selected.

5 Select the model name in [Model Name] field.

*When check [Silent Installation] in [Embedded functions in created driver set], you can select the model name which is selected in [Input Path].

6 Select the target emulation in [Emulation] field.

7 Check [Set as default printer] when you want to use the printer driver/ PC-FAX driver as default.

* Only one printer can be set as default printer. If you set multiple printers as default, only last added printer is set as default.

8 Input the IP Address to [IP Address] field.

9 Input the printer name of in set installed printer driver/ PC-FAX driver in [Printer Name] field. Don't input anything when printer name is not changed.

10 Select the kind of the TCP/IP port in a driver in [Port Settings].

When [Standard TCP/IP port] is selected, you can select [Raw] or [LPR].

In addition, when you select [Raw], you can change [port number]. And when you select [LPR], you can [queue name].

11 Check [Run the Autoconfiguration in Installation] when you want to run the autocunfiguration.

12 When click [add] button, and show model name (IP address, printer name) in [Additional drivers]. Drivers displayed in [Additional drivers] field are installed.

(When you delete the model name from [Additional drivers] field, select the model name in [Additional drivers] field and click [delete] button.)

13 When add another driver, continue the Step 5- 12.

Check [Show the installtion completed screen] when you want to show the installation completed screen.

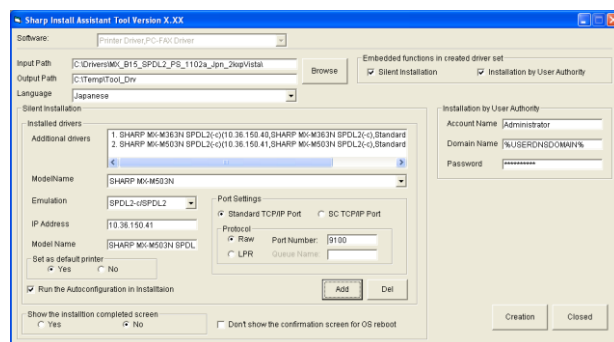
15 Check [Don't show the confirmation screen for OS reboot] when don't show the confirmation screen for OS reboot.

16 Input user information of administrator authority in [Accout Name], [Password] and [Domain Name].

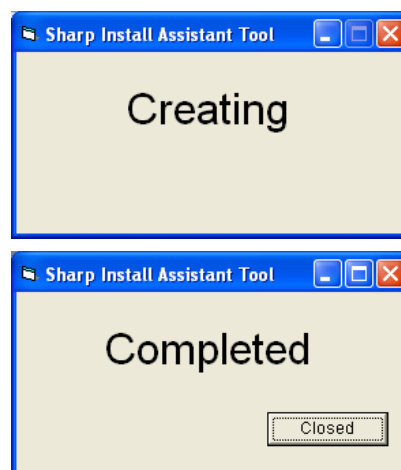
In [Account Name], the default value is "Administrator". In [Domain Name], the default value is "%USERDNSDOMAIN%".

*Don't change the domain name when users of administrator authority exist on domain.

*Change the domain name "%COMPUTERNAME%" when users of administrator authority exist on local.



Click [Create] button and execute this tool. When dialog box screen turns into "Completed" from "Creating", click [closed] button. When an error is displayed without a completion screen appearing, retry the setting according to an error message.



3.3 How to Install

This section is described how to silent install by Users Authority.

Finish the all programs before installation.

3.3.1 Copy/ Install to Client PC

Step

- 1 Copy the driver set to local folder in local PC.

Don't include the 2 byte code (Japanese character or 2 byte alphameric character) in the path.

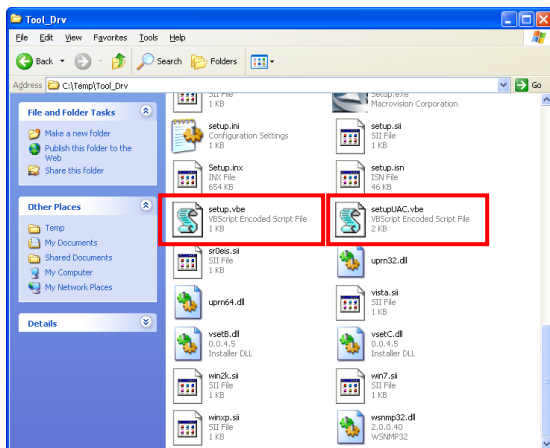
Ex) C:\Temp\Tool_Drv

- 2 (Windows XP environment)

Double click [setup.vbe] in driver set.

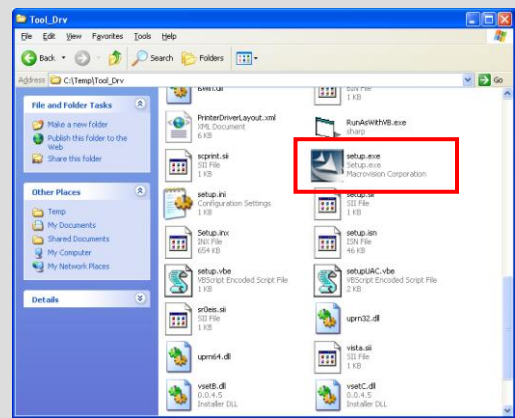
(OS environment which have UAC (User Account Control) function)

Double click [setupUAC.vbe] in driver set.



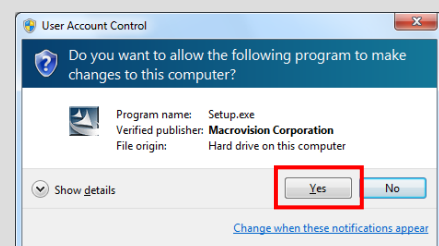
- * Confirm that [RunAsWithVB.exe] exists.
- * When add Silent Installation function, confirm that [Config.ini] exists.

You only add Silent Installation function, double click [setup.exe] in driver set.



When the driver set is installed in OS environment which have UAC (User Account Control) function, command prompt (DOS windows) is displayed. Don't input anything by keyboard or mouse.

When the driver set added "Installation by Users Authority" is installed in OS environment which have UAC (User Account Control) function, following screen is displayed in some case. Click [Yes] button and continue the installation.



*Confirm that [Config.ini] exists.

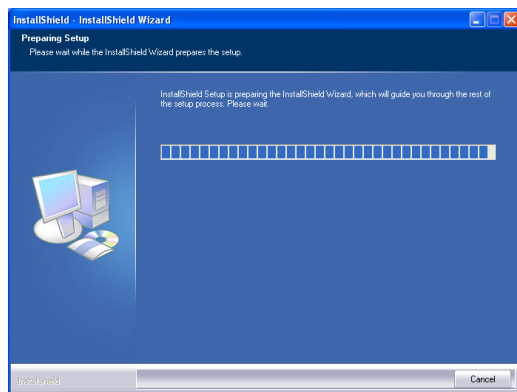
3.3.2 Case: adding Silent Installation function

Step

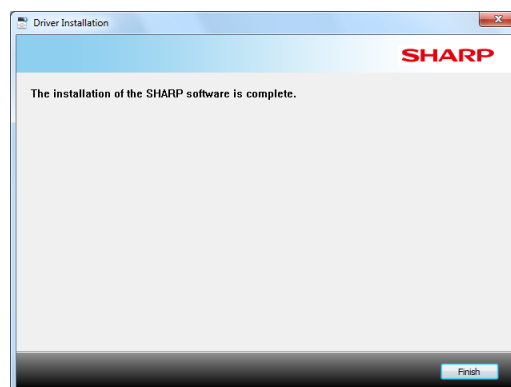
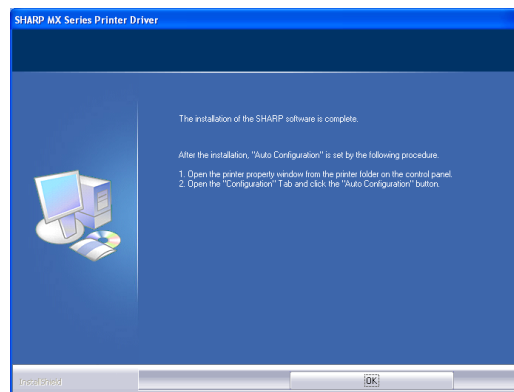
1 When you add "Silent Installation" function, wait until installation is completed since select screen isn't displayed.

2 In case that you check "No" in [Show the installation completed screen], Installation is completed when the following screen goes out.

Note: Depending on the model used, the following screen isn't displayed.



3 In case that you check "Yes" in [Show the installation completed screen], Completed screen is displayed after above screen. Click the [Finish] button.



4 Reboot the OS when displayed OS reboot selection screen.

In case that you check out [Don't show the confirmation screen for OS reboot], OS reboot selection screen isn't displayed. Reboot the OS manually after installation.

3.3.3 Case: not adding Silent Installation function

Obey the instructions of the screen because a normal installation screen is displayed.

4 Troubleshooting

4.1 About an error at tool execution

Please refer below when you execute the tool but an error occurs.

- When you don't execute tool as administrator authority. execute as administrator authority.

4.2 About an error in Installation by User Authority

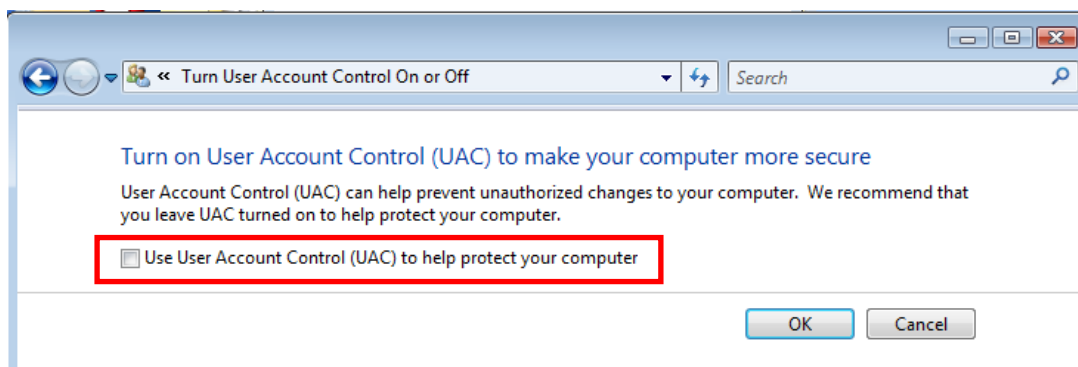
Please refer below when an error occurs at the installation using installation function by Users Authority.

- (Case: error 1311) Confirm whether [Domain Name] is correct or not.
- (Case: error 1326) Confirm whether [Account Name]/ [Domain Name]/ [Password] are correct or not.
- (Case: error 740) When UAC is enabled, UAC is disabled.
- (Case: Command prompt is displayed, and the behavior is stopped.) Close the command prompt and execute [setup.vbe] after UAC turns off.

4.2.1 UAC (User Account Control)

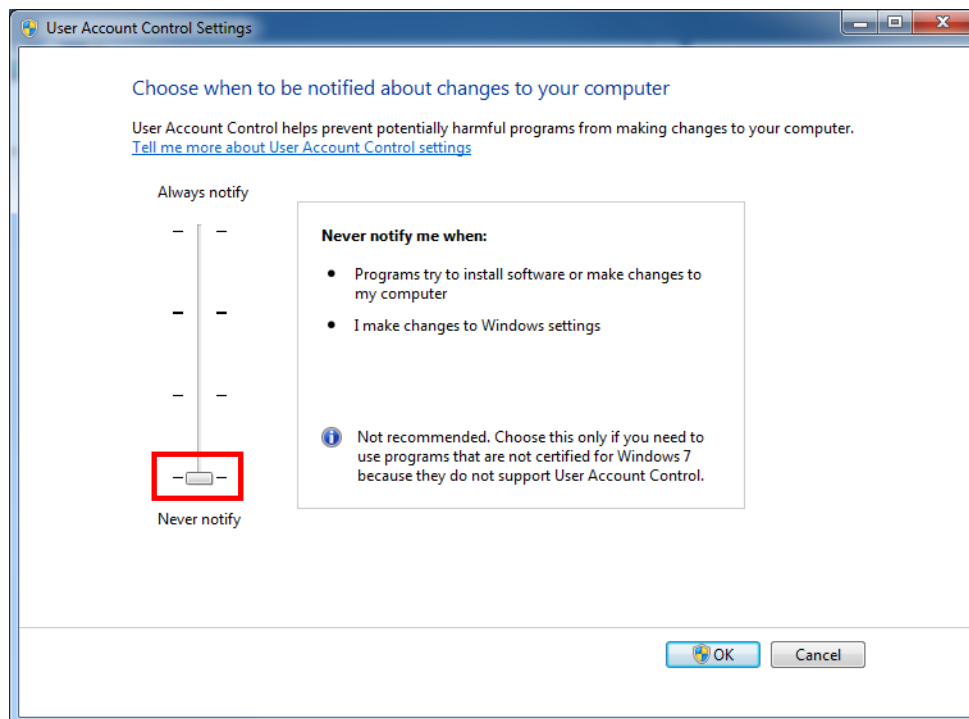
How to disable in Windows Vista

- (a) Click the [Start]→[Control Panel]→[User Accounts and Family Safety]→[User Accounts]→[Turn User Account Control (UAC) on or off].
- (b) In case of administrator account, if [User Account Control] is displayed, click the [Yes] button. In case of other account, if [User Account Control] is displayed, enter the administrator account password and click the [OK] button.
- (c) Uncheck [Use User Account Control (UAC) to help protect your computer], and click the [OK] button.
- (d) Reboot the OS.



How to disable in Windows7, 8, 8.1, 10

- (a) Click the [Control Panel]→[System and Security]→[Change User Account Control Settings].
- (b) [User Account Control Settings] screen is displayed and the setting bar is lowered to the bottom.
- (c) Click the [OK] button.
- (d) In case of administrator account, if [User Account Control] is displayed, click the [Yes] button. In case of other account, if [User Account Control] is displayed, enter the administrator account password and click the [OK] button.
- (e) Reboot the OS.



5 Trademark Acknowledgments

The following trademarks and registered trademarks are used in conjunction with this software.

- Windows and Windows Vista are registered trademarks or trademarks of Microsoft Corporation in the U.S.A. and other countries.